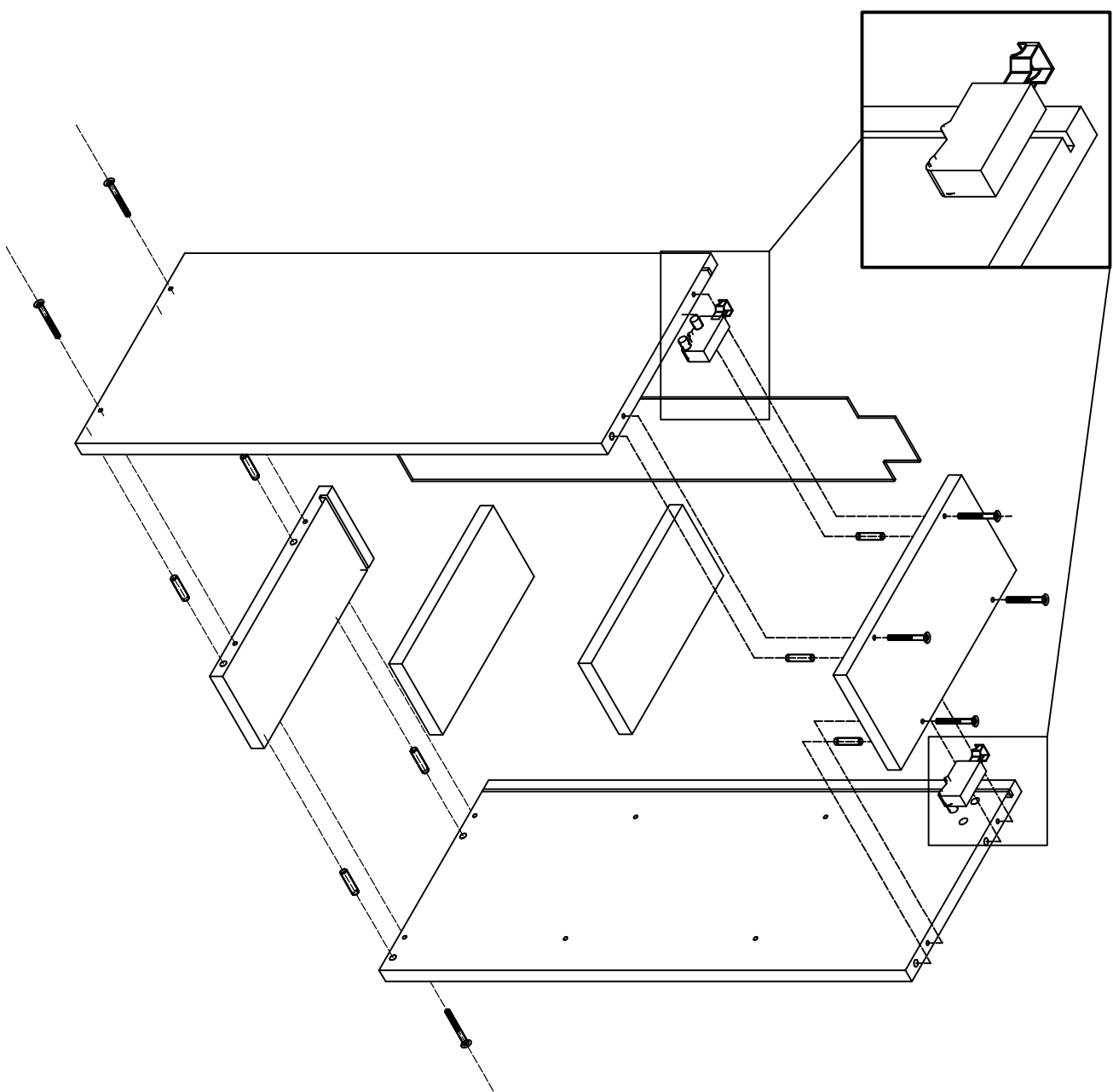
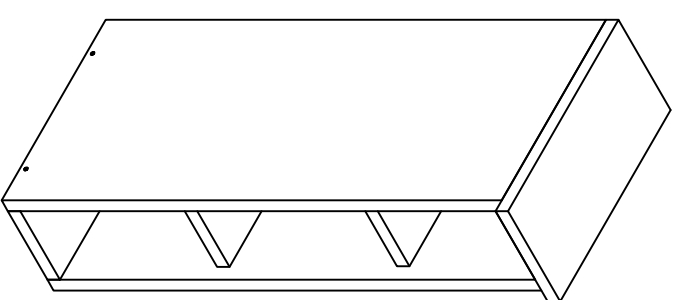




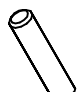





INSTRUKCJA MONTAŻU SZAFKI GÓRNEJ WO-15



WO-15



AKCESORIA

 Konfirmat x 8	 Klucz Imbus x 1	 Kolek x 8
 Zastępka x 8	 Wkręt 3,5x16 4 szt.	 Gwoździe x 12
 Podobójka półek x 8	 Zawieszka z boczni L+R x 2	